

# VIP X1600 Base



Security Systems

EN | Quick Installation Guide  
Network Video Server

**BOSCH**



### Warning

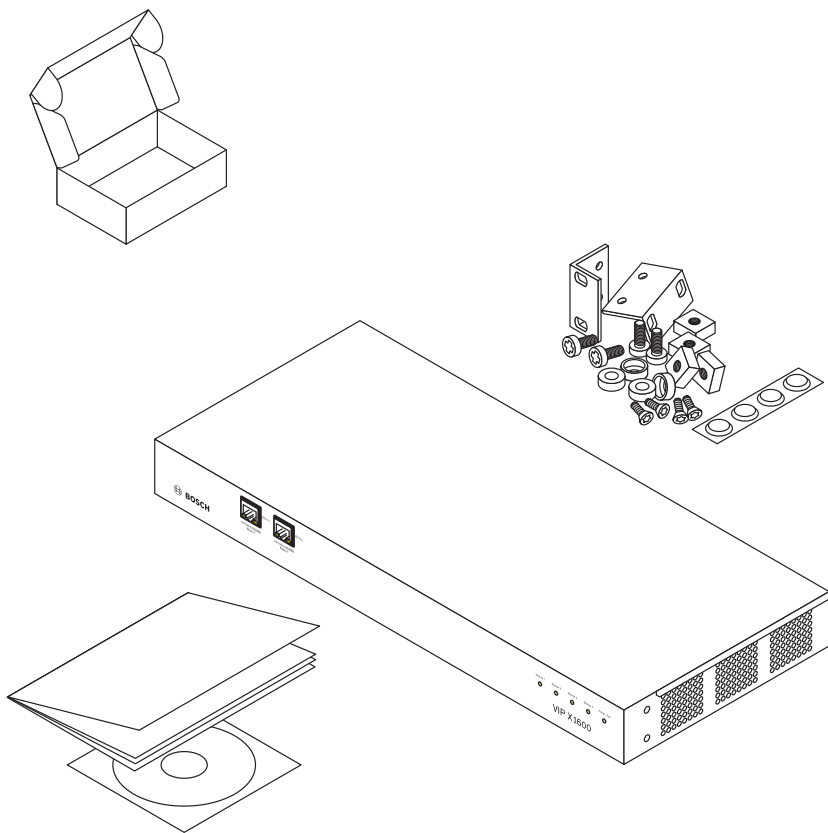
You should always make yourself familiar with the required safety measures in the corresponding chapter of the user's manual. You will find important details on the installation and on the operation of the unit in the user's manual. These instructions "Quick Installation Guide" only show the basic installation of a VIP X1600 base; they are no substitute for the complete user's manual.

These instructions "Quick Installation Guide" refer to the VIP X1600 base. They show installation of modules into a VIP X1600 base, mounting and initial operation. In the drawings the VIP X1600 module displayed in audio version stands for all versions.

## Contents of Delivery

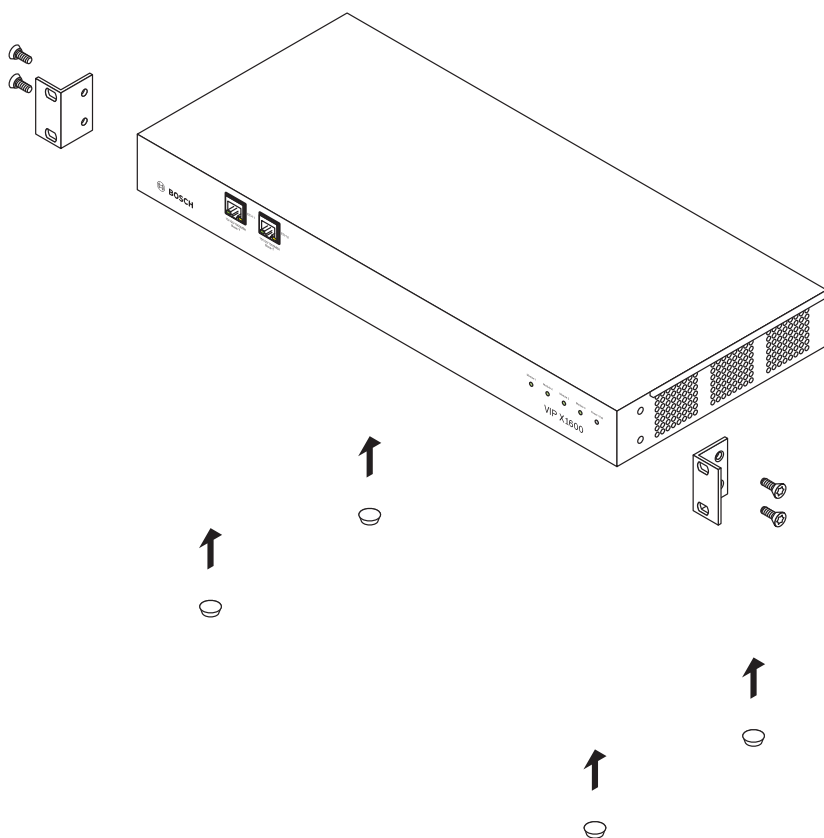
- VIP X1600 base
- Mounting kit for installation in 48 cm (19 in.) racks
- Self-adhesive elastic bumpers
- CD-ROM
- Quick Installation Guide

## 1. Unpack the Box



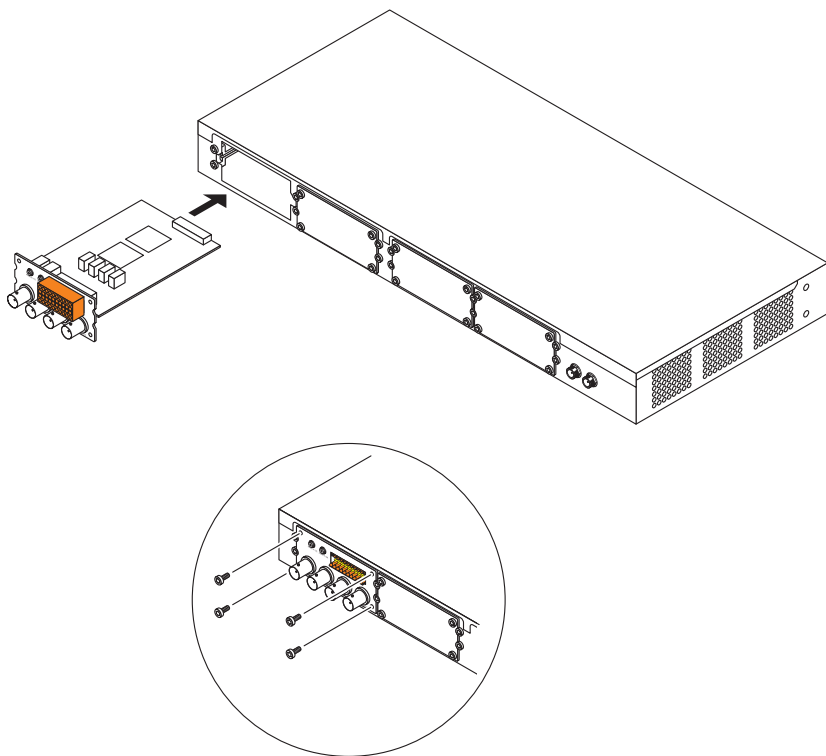
- Please check the delivery for completeness and integrity.
- Have your unit checked by Bosch Security Systems if you detect any damages!

## 2. Prepare the Base



- Screw the two brackets for the rack mounting onto the housing, if necessary.
- For use as desktop unit stick the four bumpers to the underneath of the housing.

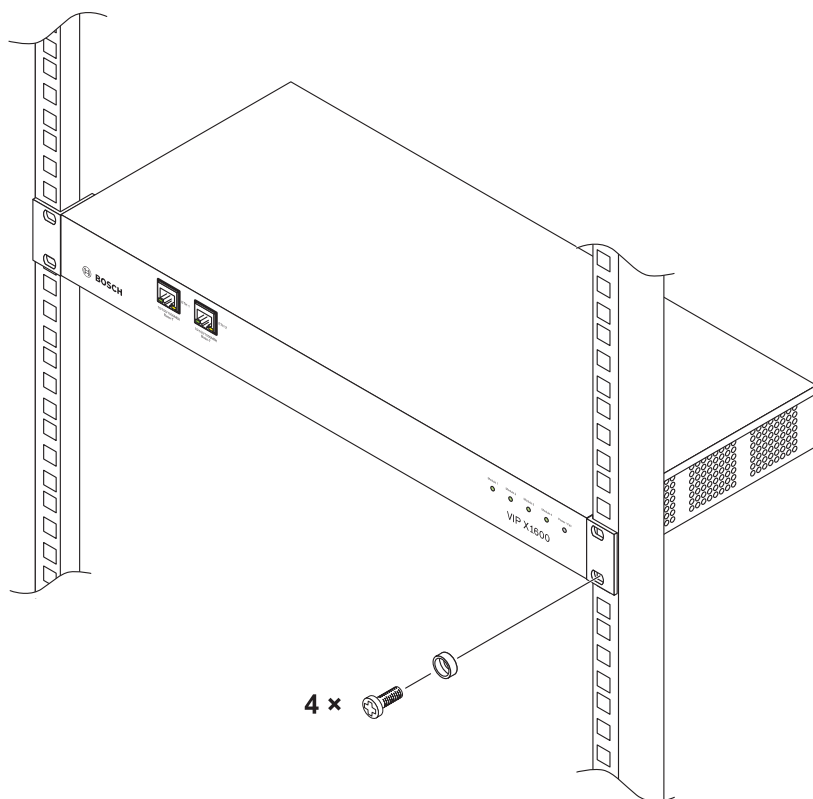
### 3. Mount the Modules



- Fit the first VIP X1600 module into the rails on the right and the left of the left-most slot and slide the module right into the VIP X1600 base carefully.
- Fit in the four screws provided and tighten them.
- Fit any additional VIP X1600 module the same way, if necessary. To do so, remove the respective cover plate first by unscrewing the four screws in the corners.
- After removing a VIP X1600 module the unused slot must be closed by means of a cover plate to provide a proper air ventilation.

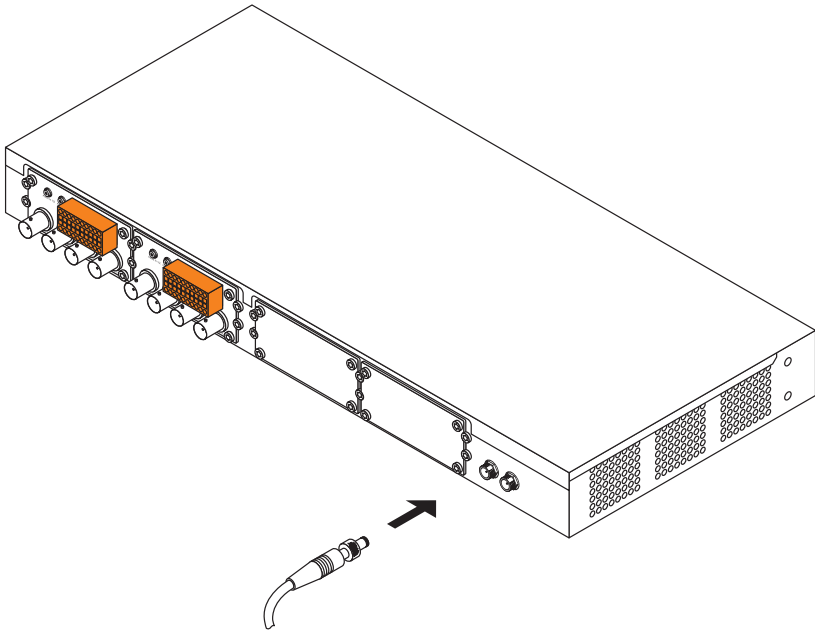
**Note:** Modules are hot swappable and can be mounted while the VIP X1600 base is powered. Take special care when doing so!

## 4. Rack mounting



- Place the cage nuts in the corresponding holes or spaces in the rack frame.
- Lift the VIP X1600 base into the rack frame and insert the fastening screws and plain washers.
- Tighten the screws in turn and then check the secure fitting of all screws again.

## 5. Power supply

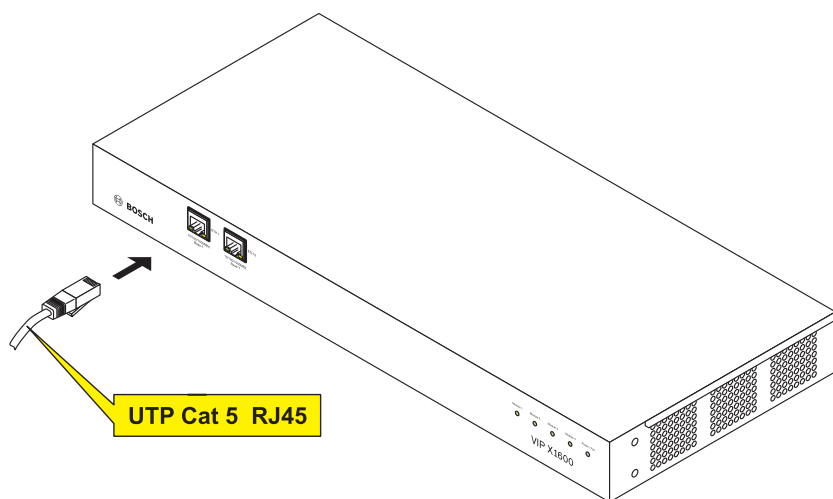


- Insert the plug of the power supply unit to the **INPUT 1** socket on the rear side of the VIP X1600 base and tighten the wrap ring manually.
- Connect the power supply unit to the power outlet.
- Connect a second power supply unit to the **INPUT 2** socket, if necessary.

**Note:** Power supply units are not included in delivery. You can order power supply units in different variations at Bosch Security Systems.

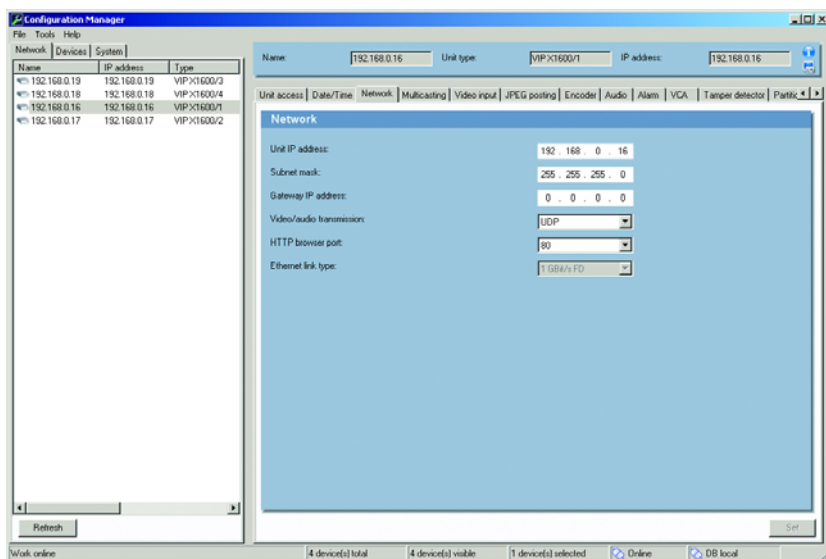


## 6. Connect to the Network



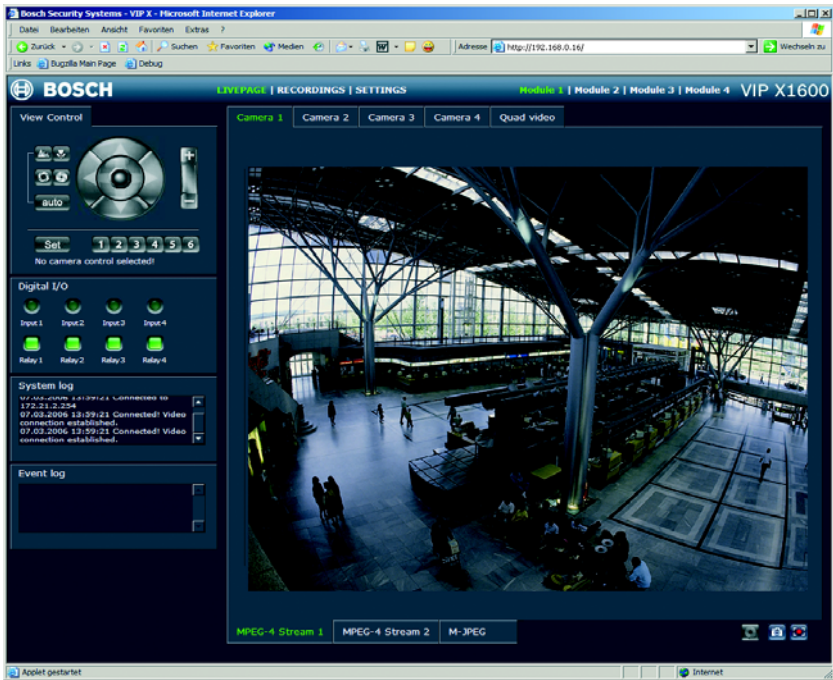
- Connect the VIP X1600 base to the network via the **ETH 1** socket.
- If necessary, set up a redundant network connection or connect an iSCSI RAID system using the **ETH 2** socket.

## 7. Configure the IP Address



- Install the program **Configuration Manager** from the CD-ROM provided. To do so start the **Setup.exe** file in the ...\**Configuration Manager** folder on the CD-ROM.
- Start the **Configuration Manager** when installation is completed. The network is scanned for compatible devices automatically.
- When a VIP X1600 module is listed, click the entry and click the tab **Network**, located in the right frame.
- Enter the desired IP address (e.g. **192.168.0.16**) in the **Unit IP address** field and click the button **Set** at the bottom on the right. The new IP address is valid after a reboot of the unit.

## 8. Test the Configuration



- Launch the Web browser and enter the IP address of the VIP X1600 module as the URL (e.g. **http://192.168.0.16**) to check that the unit is properly connected to the network.

**Note:** Set the graphics card of the computer to 16-bit or 32-bit color depth. Otherwise the computer cannot display the video images.

- Use the links at the top of the Web pages to navigate.

Bosch Sicherheitssysteme GmbH  
Robert-Koch-Straße 100  
85521 Ottobrunn  
Germany  
[www.bosch-sicherheitssysteme.de](http://www.bosch-sicherheitssysteme.de)

Bosch Security Systems B.V.  
P.O. Box 80002  
5600 JB Eindhoven  
The Netherlands  
[www.boschsecuritysystems.com](http://www.boschsecuritysystems.com)

© 2006 Bosch Sicherheitssysteme GmbH  
Subject to change.  
VIPX1600BASE/0806/QLG\_en/3

**BOSCH**