

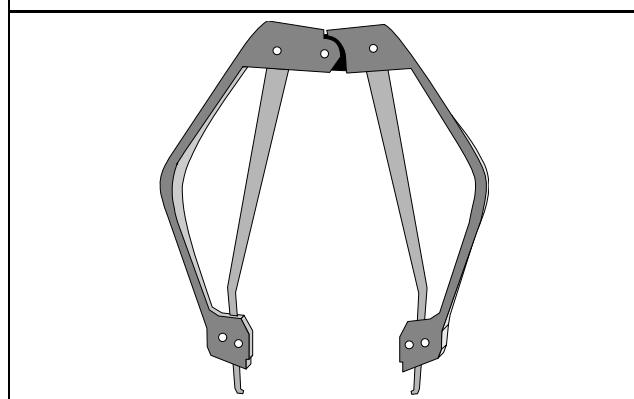
1. Introduction

This Update Kit has been provided to allow existing DX4020/DX4010i units to be updated with the latest firmware revision. This is accomplished by replacing the ROM in the unit with the ROM included in the Update Kit.

2. Requirements

You will need a PLCC extraction tool for this procedure (refer to *Figure 1*). This tool is not supplied with the update kit but can be purchased at Radio Shack (P/N: 276-2101) or other electronic stores.

Figure 1: PLCC Extraction Tool



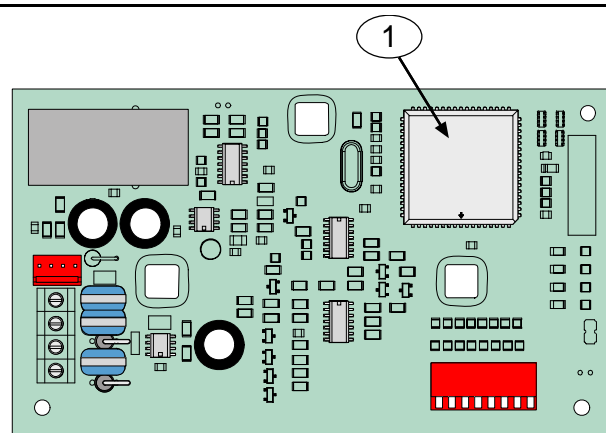
Do NOT use a screwdriver or any other prying device for this procedure. Incorrectly removing or replacing the ROM may damage the board. Bosch Security Systems, Inc. cannot be responsible for panels damaged as a result of incorrectly removing and installing the ROMs.

3. Updating the DX4020/DX4010i Firmware

Power down the DX4020/DX4010i by disconnecting the power source.

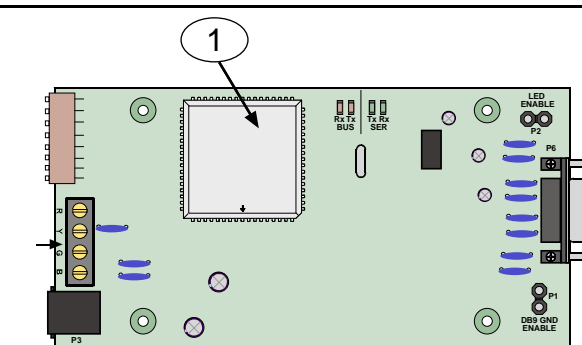
The ROM to be replaced is resting in a square socket on the board. Refer to *Figure 2* and *Figure 3*.

Figure 2: DX4020 Layout



1 - ROM to be removed

Figure 3: DX4010i Layout



1 - ROM to be removed



BOSCH

3.1 Remove the old ROM



Prior to removing the ROM, touch a grounded point to discharge any static electricity.

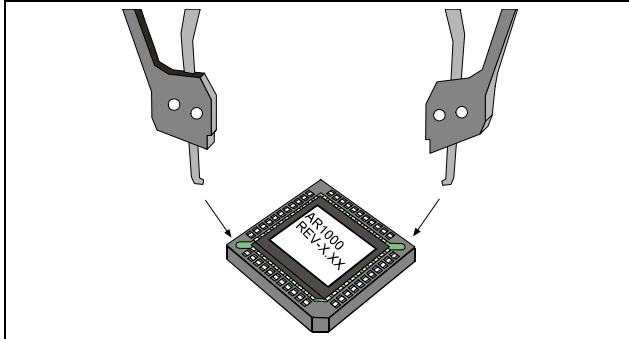
Place the tips of the PLCC extraction tool in the slots on diagonal corners of the socket. Then push the handles of the extractor in while gently lifting straight up. Refer to *Figure 4*.



DO NOT rock the ROM or pull one side up before the other as damage to the socket may occur.

Discard the old ROM.

Figure 4: Removing the ROM



3.2 Installing the update ROM



Prior to handling the update ROM, ensure that you are properly grounded and that static electricity has been minimized or eliminated.

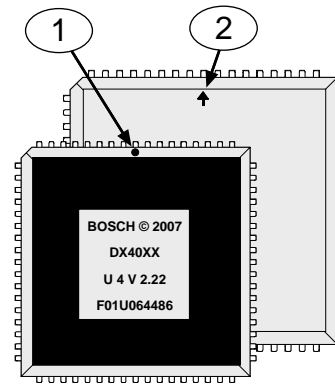
Place the new ROM over the socket, ensuring that the notch on the ROM is lined up with the arrow on the inside of the socket. Refer to *Figure 5*.

Once this has been determined, slowly push down on the ROM making sure that it is fully seated.



DO NOT rock the ROM or push one side down before the other as damage to the socket may occur.

Figure 5: ROM



1 - Notch location on ROM

2 - Arrow location on socket

3.3 Reconnect power to the DX4020/DX4010i.

Reconnect the DX4020/DX4010i and apply power.

4. Testing the DX4020/DX4010i after the upgrade process.

Perform a full system test after updating the firmware.

