



UHI-ASBG-0 室内防护罩



BOSCH

中文 安装手册
en Installation Manual

目录

1 拆开包装 5

1.1 部件清单 5

1.2 所需工具 5

2 拆卸视图 6

3 说明 7

4 电缆要求 8

5 安装防护罩..... 9

5.1 打开护盖 9

5.2 直通式布线..... 9

5.3 **NPT** 接头 9

5.4 准备电缆 11

5.5 将摄像机和垫片连接至托架 12

6 安装防护罩..... 13

6.1 安装摄像机托架 14

6.2 连接电线 14

7 操作 14

8 维护 14








Table of Contents

9	Unpacking	19
9.1	Parts List	19
9.2	Tools Required.....	19
10	Exploded View	20
11	Description.....	21
12	Cable Requirements	22
13	Installing the Housing	23
13.1	Opening the Cover.....	23
13.2	Feed-through Wiring	23
13.3	NPT Fittings	23
13.4	Wire Preparation.....	25
13.5	Attaching the Camera and Spacer to the Tray.....	26
14	Mounting the Housing	27
14.1	Installing the Camera Tray	28
14.2	Connecting the Wires	28
15	Operation	28
16	Maintenance.....	28

重要安全防护信息

1. 阅读、遵循并保留说明 - 操作设备之前，必须阅读并遵循所有安全及操作说明。请保留好说明，以备将来参考。
2. 留意警告 - 请严格遵循设备上的所有警示以及操作说明中的所有警告信息。
3. 附件 - 不要使用产品制造商推荐之外的附件，因为这些附件可能会导致危险。
4. 安装注意事项 - 勿将此设备置于不稳定的台面、三脚架、支架或底座上。设备可能掉落而造成严重人身伤害，同时也会严重损坏设备。请仅使用制造商推荐的附件或随产品提供的附件。根据制造商的说明安装设备。移动装有电器的推车时应小心谨慎。停止过猛、用力过度或表面不平整均可能导致装有电器的推车翻倒。
5. 清洁 - 清洁之前，应先从插座中拔下设备的电源插头。遵循设备附带的所有说明。一般情况下，只需使用湿布清洁设备。请勿使用液体清洁剂或喷雾清洁剂。
6. 维修 - 不要尝试自行维修设备。打开或拆卸护盖可能导致电击或其它危险。所有维修事项均应交给合格的维修人员处理。
7. 需要进行维修的损坏事项 - 发生以下情况时，请断开设备的主交流电源，然后通知合格的维修人员进行维修：
 - 电源线或插头损坏。
 - 液体溅入设备或有异物落入设备。
 - 设备被打湿或暴露在恶劣天气（雨、雪等）中。
 - 按操作说明执行操作时，设备不能正常工作。请仅调节操作说明中指定的控件。错误地调节其它控件可能导致设备损坏，并会加大合格技术人员排除设备故障的工作量。
 - 设备掉落或机柜损坏。
 - 设备在性能上发生显著变化，指示设备需要进行维修。
8. 替换部件 - 需要替换部件时，维修人员应使用制造商指定的替换部件，或与原部件具有相同特性的部件。擅自使用其它部件进行替换可能导致火灾、遭受电击或发生其它危险。
9. 安全检查 - 维修设备之后，请让维修人员执行安全检查，以确保设备能正常工作。
10. 电源 - 仅使用标签上指明的电源类型操作设备。如果不确定所用的电源类型，请联系相关营运商或当地供电公司。
 - 对于使用电池进行操作的设备，请参考操作说明。
 - 对于使用外部电源进行操作的设备，请仅使用推荐的合格电源。
 - 对于使用限定电源进行操作的设备，所用电源必须符合 EN60950 标准。换用其它任何电源均可能损坏设备或导致火灾或电击。
 - 对于工作电源为 24VAC 的设备，标准输入电压为 24VAC。设备的电源输入电压不得超过 30 VAC。
 用户在 24 VAC 电源和设备之间执行的布线必须符合电气规则（2 类电源级别）。不要让 24 VAC 电源在接线端处或设备电源的接线端处接地。
11. 同轴电缆接地 - 如果设备连接了外部电缆系统，请确保该电缆系统已接地。仅限美国型号 - Section 810 of the National Electrical Code, ANSI/NFPA No.70（美国国家电工标准 810 条款，ANSI/NFPA No.70）提供了有关以下方面的信息：底座和支撑结构的正确接地、连接至放电设备的同轴电缆的接地、接地导线尺寸、放电设备位置、连接接地电极以及接地电极的要求。
12. 接地 - 本装置可能配有一个 3 导线接地插头（此类插头带第三根插针，用于接地目的）。此安全特性使插头只能插入接地型电源插座。如果不能将插头插入插座，请联系电工更换老式插座。请不要破坏接地型插头的安全功效。
 - 对于室外设备，应仅在本装置的接地插头连接至接地型插座或其接地终端正常连接至接地源时，才能连接至本装置的输入连接器。
 - 在断开与接地插头和接地终端的连接之前，必须从本装置的输入连接器上断开室外设备。
 - 对于与本装置相连的任何室外设备，必须采取正确的安全预防措施，例如接地。
13. 雷电 - 为在雷电期间或在设备无人照看或长期不用时进一步保护设备，请从墙上插座拔下设备的电源插头，断开电缆系统。这可防止因雷电或电源线上的电涌而损坏设备。

安全预防措施

	CAUTION RISK OF ELECTRIC SHOCK. DO NOT OPEN!	
注意：为避免受到电击，不要拆除护盖（或后盖）。用户不得擅自维修里面的部件。有关维修事项，请咨询合格的维修人员。		
	此符号表示产品机壳内存在未绝缘的“危险电压”，可能造成电击。	
	此符号表示产品随附的文档中介绍了重要的操作和维护（维修）说明。	
	安装须由合格的维修人员遵照美国国家电工标准或相关电气规则进行。	
	断开电源。安装时，应提供适当的断开连接设备。	
	依据国家法律制定的有关废旧电气和电子设备及其实施的 2002/96/EC 标准，到达寿命极限的电气工具必须单独回收，且送至环保机构进行处理。	

前言

本指南介绍如何安装 UHI-ASBG-0 系列。

适用对象



本指南适用于合格的安装和维修人员，而且他们必须熟悉相应的国家和当地电气规章。

文档约定

约定	含义
粗体	表示部件、项目或组件。
斜体	表示一个引用其它段落、图或表的链接。
下划线	用于强调要点。
<code>courier</code>	表示对象的实际名称、应键入的具体代码或系统返回的信息。

符号

您可能会在本文档中遇到下列符号。每个符号后面都附带了说明文本，用于提供有关操作详情或强调安全信息的附加内容。

	注意！“注意”用于通知您一些不太重要的基本信息。请仔细阅读这些信息，因为其中包含的指导或说明可帮助您避免出错。
	警告！表示警告强调信息。如果忽略了这些信息，则可能损坏系统或导致人身伤亡。必须严格遵守警告信息。

客户支持和服务

如果此装置需要维修，请联系最近的博世安保有限公司维修中心，获取装置运回授权并了解装运说明。

维修中心

美国

电话：800-366-2283 或 585-340-4162

传真：800-366-1329

电子邮件：cctv.repair@us.bosch.com

CCTV 备用件

电话：800-894-5215 或 408-957-3065

传真：408-935-5938

电子邮件：BoschCCTVparts@ca.slr.com

加拿大

电话：514-738-2434

传真：514-738-8480

欧洲、中东和亚太地区

电话：44 (0) 1495 274558

传真：44 (0) 1495 274280

电子邮件：rmahelpdesk@solelectron.com

如需了解详细信息，请访问 www.boschsecurity.com

相关出版物

如需了解最新的数据表，请参阅博世安保有限公司的最新数据手册。要获得数据手册的副本，请联系当地的博世代表。

此外，您还可以访问博世安保有限公司网站：<http://www.boschsecurity.com>，查看最新出版物列表。

1 拆开包装

应当小心拆开此设备的包装并谨慎处理。如果某件物品似乎在运输途中受损，请立即通知承运商。

对照部件清单，确保所有部件均完整无缺。如果缺少某件物品，请通知博世安保有限公司的销售代表或客户服务代表。

原始的包装箱是此装置最安全的运载工具，当运回此装置以进行维修时，必须使用此包装箱。请妥善保管以备将来使用。

1.1 部件清单

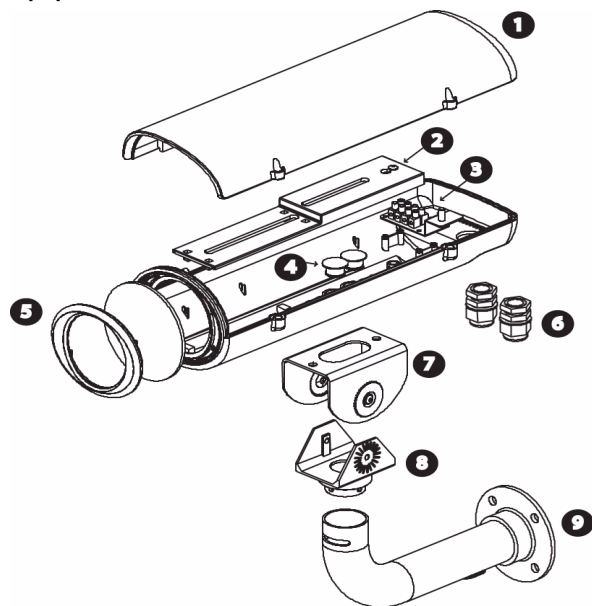
下表列出了随附的部件：

数量	部件
1	防护罩
1	安装架
1	安装手册
1	附件包
1	3 毫米六角扳手
1	防拆扳手 M3.5 T20
2	SCR 1/4 英寸 20 x 5/8 英寸 N(+) SS
2	SCR 1/4 英寸 20 x 1/2 英寸 N(+) SS
2	SCR 1/4 英寸 20 x 3/8 英寸 N(+) SS
2	1/4 英寸垫圈
1	4 毫米垫片
1	9 毫米垫片
2	橡胶垫圈 PG 3/8 英寸
2	橡胶垫圈 PG 1/2 英寸
2	NPT 接头 3/8 英寸 CE
2	NPT 接头 1/2 英寸 CE

1.2 所需工具

- 小平头螺丝刀
- 十字头螺丝刀（#1 和 #2）
- 活口扳手
- 钢丝钳 / 剥线钳 / 卷边工具

2 拆卸视图



参考	部件
1	顶盖
2	摄像机托架
3	连接器座
4	孔塞
5	前视窗固定器
6	NPT 接头
7	可调节安装头
8	安装头
9	J 型底座

3 说明

UHI-ASBG-0 系列是一款造型精美的室内防护罩，不仅价格低廉，而且安装十分简单，因此非常适合客户的需求。仅需拧下两颗防拆螺丝即可打开护盖并露出摄像机和镜头。电源和视频电缆可以通过防护罩底部或后部的防水接头进行连接。

摄像机额定值	
环境温度 ¹	0° C (32° F) - 50° C (122° F)
功耗	最大 10 瓦
电压	100 - 240 VAC 或 12 - 28 VAC / 12 - 30 VDC (低压型号)
摄像机重量 (不含镜头)	0.45 千克 (1 磅)
镜头最大重量	1 千克 (2.2 磅)
操作温度	-20° C (-4° F) - 50° C (122° F)
认证	UL、cUL、CE、VDE、CSA

1. 摄像机外壳的最大建议环境温度：50° C (122° F)。安装在内部的摄像机和镜头的额定功耗每升高 1 瓦，温度下降 0.8° C (1.4° F)。

4 电缆要求

UHI-ASBG-0 系列的规格可能因使用的型号不同而有所差异。有关详细信息，请参见下表。

视频传送（同轴电缆）

类型	规格
电缆类型	同轴电缆
电缆尺寸	外径介于 4.6 毫米（0.181 英寸）和 7.9 毫米（0.312 英寸）之间
电缆形状	圆形
包层	> 93% 编织铜丝包层
中心导线	铜绞线
电缆电阻	75 欧姆
评级代理	UL
环境	室外
额定温度	> 80° C
来源	Belden 9259 H05RN-F 3 G 1.00

电源线 - 北美

类型	规格
电缆类型	额定
电缆尺寸	外径介于 4.6 毫米（0.18 英寸）和 7.9 毫米（0.31 英寸）之间
电缆形状	圆形
导体	3 导线版本
评级代理	UL/C.S.A., UL VW-1
环境	室外
额定温度	105° C
额定电压	300 V

电源线 - 欧洲

类型	规格
电缆类型	H05RN-F 3 G 0.75 和 H05RN-F 3 G 1.00
电缆尺寸	外径介于 4.6 毫米（0.18 英寸）和 7.9 毫米（0.31 英寸）之间
电缆形状	圆形
导体	3 导线版本
评级代理	VDE
环境	室外

5 安装防护罩

本章简要介绍了 UHI-ASBG-0 室内防护罩系列的安装步骤。应由合格的服务人员进行安装，且必须遵守所有当地法规。

5.1 打开护盖

UHI-ASBG-0 防护罩通过两 (2) 颗防拆螺丝加以固定。要打开护盖，请使用随附的防拆扳手拧下螺丝。

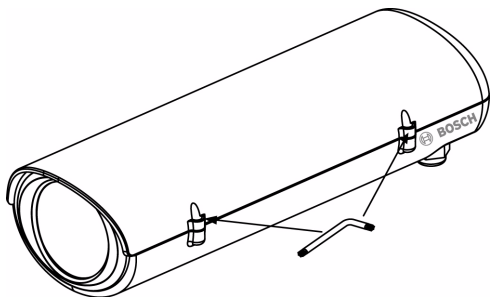


图 5.1 打开护盖

5.2 直通式布线

UHI-ASBG-0 具有用于穿引电缆的直通式布线孔。安装摄像机之前，请先取下后部或底部的两 (2) 个橡胶圆形孔塞，然后安装 NPT 接头 (参见第 5.3 节：NPT 接头)。

5.3 NPT 接头

NPT 接头用于确保密封。视 UHI-ASBG-0 的安装方式而定，您可以在防护罩的后部或底部安装 NPT 接头。随附的 3/8 英寸 NPT 接头可以接入直径在 4.3 毫米 (0.17 英寸) 到 11.4 毫米 (0.45 英寸) 之间的圆形电缆。两个较大的 1/2 英寸 NPT 接头可以接入直径在 6.5 毫米 (0.26 英寸) 到 10.5 毫米 (0.42 英寸) 的电缆。

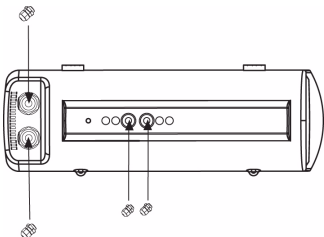


图 5.2 安装 NPT 接头

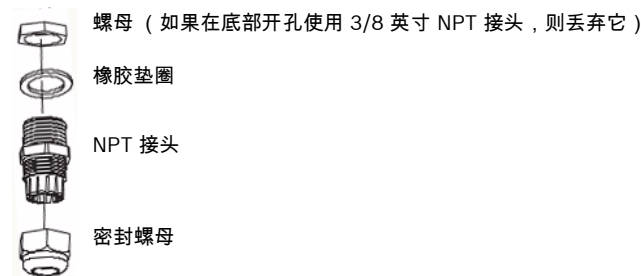


图 5.3 NPT 拆卸视图

安装 NPT 接头

1. 确定是使用后部还是底部的开孔，然后取下两 (2) 个橡胶孔塞。
2. 拧下防护罩内侧用于固定摄像机托架的螺丝。将螺丝放在一边。
3. 将托架滑向防护罩后部，使其脱离防护罩并取出。将托架放在一边。
4. 将两 (2) 个 1/2 英寸 NPT 接头和橡胶垫圈（位于防护罩外侧）直接连接到后部开孔（参见第 10 页的图 5.4）。

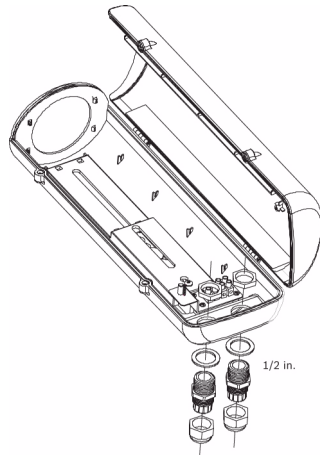


图 5.4 连接 1/2 英寸 NPT 接头

- 或者 -

将两 (2) 个 3/8 英寸 NPT 接头（丢弃螺母）和橡胶垫圈（位于防护罩外侧）直接连接到底部开孔（参见第 10 页的图 5.5）。



图 5.5 连接 3/8 英寸 NPT 接头

5. 用防护罩随附的圆形孔塞将所有未使用的开孔堵住。



注释！ 拧紧所有接头，以防液体流入。否则，进入防护罩的潮气会损坏摄像机和镜头。如要使用密封剂，请确保使用中性密封剂。释放乙酸的密封剂会损坏摄像机的电子零件。建议在后端盖外侧的缆线上使用滴水环。

5.4 准备电缆

用于为 UHI-ASBG-0 供电的电源线必须符合 Nec 400-4 CEC 规则 4-010 且标有“ INDOOR”、“ W”或“ W-A” 字样。对于 24 伏摄像机，请参照“ 推荐的最大电缆长度” 表来选择合适的电缆尺寸。

电缆尺寸 (mm ²)	电缆尺寸 (AWG)	距防护罩的长度
0.5	20	27 米 (90 英尺)
1	18	42 米 (140 英尺)
1.5	16	67 米 (220 英尺)
2.5	14	108 米 (355 英尺)
4	12	172 米 (565 英尺)

表 5.1 用于 24 V 摄像机防护罩的最大电缆长度

准备电源

截断 120 VAC 和 230 VAC 型摄像机上的电源线；保留足够长的电缆以连接至接线盒。从电缆上至少剥掉 6 毫米 (0.25 英寸) 到 8 毫米 (0.31 英寸) 的绝缘层。不要割断电缆。

准备接线盒

如果电线的尺寸大于 2.5 mm² (14 AWG)，则应分成更细的电线才能接入接线盒。接线盒可以连接 0.5 到 2.5 mm² (20 到 14 AWG) 的电线。当使用较粗的电线时，请在接线盒端部将电线分成更细的电线。如果电线不能穿过接头，则可能需要在分线盒内进行分线。

接线图

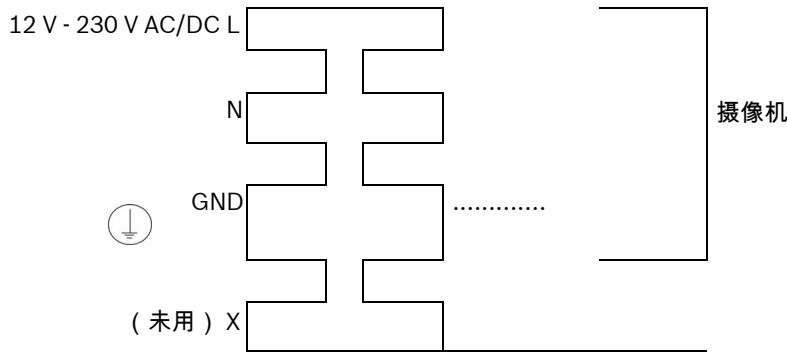


图 5.6 端子连接



警告！ 安装外部互连电缆时，必须遵守 NEC、ANSI/NFPA70 (适用于美国) 和“ 加拿大电气法规” 第一部分 CSA C22.1 (适用于加拿大) 及所有其它国家 / 地区的当地法规。

在建筑物中安装时，要求采用一个 2 针 20A 断路器或支路额定保险丝来保护分支电路。必须使用一个易于访问的 2 针断开设备，且针脚触点之间至少应相隔 3 毫米。

5.5 将摄像机和垫片连接至托架

UHI-ASBG-0 随附了两 (2) 个用于保持摄像机水平的垫片 (参见 第 12 页的图 5.7)。如果不使用垫片, 摄像机可能会下沉, 导致出现一个开孔效果。

安装摄像机和垫片

1. 将镜头安装至摄像机。
2. 暂时将摄像机托架放入防护罩。但不要固定。
3. 确定是否需要安装随附的垫片。如果需要, 将其放在托架较低一侧的顶部, 如 第 12 页的图 5.7 所示。
4. 将摄像机放在防护罩内部的右上侧, 使镜头到防护罩窗口的距离约为 1/8 英寸 (镜头不应碰到窗口)。

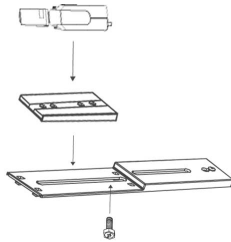


图 5.7 将摄像机和垫片连接至托架

5. 保持所有三 (3) 个组件 (托架、垫片和摄像机) 组合在一起 (不要拆散), 然后从防护罩中取出。翻转组件, 然后用 1/4-20 x 5/8 英寸螺丝和大平垫圈加以固定。
6. 将其放在一边。

6 安装防护罩

UHI-ASBG-0 防护罩随附一个 J 型底座，它包含一个可拆卸的摄像机架和用于防止防护罩下垂的锁槽。用户可以通过上下推动防护罩来垂直调节底座。

安装步骤

1. 确定防护罩的正确位置。
2. 将从墙壁引出的同轴电缆和电源线插入随附的 J 型底座，并留出足够的长度以穿过防护罩（如果使用底部接头，请参见第 13 页的图 6.1；如果使用后部接头，请参见第 13 页的图 6.2）。

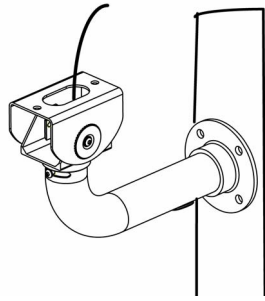


图 6.1 使用底部 NPT 接头接入电线

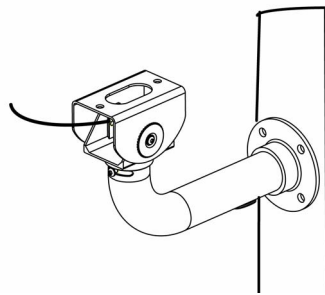


图 6.2 使用后部 NPT 接头接入电线

3. 准备安装表面并安装 J 型底座。

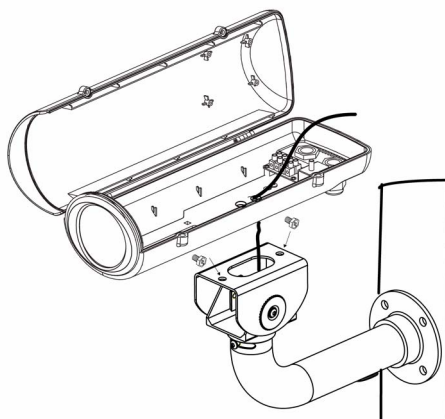


图 6.3 安装 J 型底座和防护罩

4. 将 UHI-ASBG-0 防护罩放在 J 型底座的顶部，同时将电线穿过底部或后部的 NPT 接头。
5. 确保摄像机的重量分布均匀。
6. 使用两个 1/4-20 x 0.50 英寸螺丝和两个 1/4 英寸垫圈，将防护罩固定到底座上。必须使用垫圈才能正确拧入螺丝。



注释！最外面的一组 1/4-20 螺纹孔用于固定到直通型底座，而最里面的 1/4-20 螺纹孔则用于固定到所有其它类型的底座和云台（参见图 1）。如固定到所有其它底座和云台，请参阅特定设备的安装指南。

6.1 安装摄像机托架

检查摄像机和镜头的工作情况，然后根据需要调节摄像机焦距和光圈。有关说明，请参见特定摄像机的使用手册。

安装摄像机托架

1. 将装有摄像机的摄像机托架（参见第 5.5 节：将摄像机和垫片连接至托架）滑入防护罩的插槽。
2. 用螺丝固定摄像机托架。

6.2 连接电线

开始之前，请检查视频同轴电缆的 BNC 接头是否从主电源接头 / 电路上断开，并且电缆之间是否相互隔开。连接视频同轴电缆时，请仅使用第 4 节：电缆要求中列出的电缆。

连接电线

1. 将 BNC 接头连接到同轴电缆。
2. 将同轴电缆连接到摄像机。
3. 将电源线从电源插座连接到接线盒。
4. 将电线从接线盒连接到摄像机。
5. 拧紧接头，扭矩为 8.5 至 9.0 N.m (75 至 80 in. lb)。额定扭矩约为：接头开始夹紧电线时，再旋转 1 至 1-1/2 转。
 - 拧紧所有接头，以防液体流入。否则，进入防护罩的潮气会损坏电气部件、摄像机和镜头。
 - 如要使用密封剂，请确保使用中性密封剂。释放乙酸的密封剂会损坏摄像机的电子零件。
 - 建议在后端盖外侧的缆线上使用滴水环。
6. 使用随附的孔塞堵住所有未用的开孔。
7. 合上护盖并用随附的扳手紧固防拆螺丝。

7 操作

除需调节摄像机 / 镜头之外，这些防护罩无需另行调节即可使用。

8 维护

除偶尔需要清洁视窗之外，无需进行特殊维护。可用水或任何非腐蚀性液体清洁窗口。有计划的定期维护将有助于延长此装置的使用寿命。根据需要，使用用水稀释的中性非磨损型清洁剂和软布清洁窗口。

Important Safeguards

1. **Read, Follow, and Retain Instructions** - All safety and operating instructions should be read and followed before operating the unit. Retain instructions for future reference.
2. **Heed Warnings** - Adhere to all warnings on the unit and in the operating instructions.
3. **Attachments** - Attachments not recommended by the product manufacturer should not be used, as they may cause hazards.
4. **Installation Cautions** - Do not place this unit on an unstable stand, tripod, bracket, or mount. The unit may fall, causing serious injury to a person and serious damage to the unit. Use only manufacturer-recommended accessories, or those sold with the product. Mount the unit per the manufacturer's instructions. Appliance and cart combination should be moved with care. Quick stops, excessive force, or uneven surfaces may cause the appliance and cart combination to overturn.
5. **Cleaning** - Unplug the unit from the outlet before cleaning. Follow any instructions provided with the unit. Generally, using a damp cloth for cleaning is sufficient. Do not use liquid cleaners or aerosol cleaners.
6. **Servicing** - Do not attempt to service this unit yourself. Opening or removing covers may expose you to dangerous voltage or other hazards. Refer all servicing to qualified service personnel.
7. **Damage Requiring Service** - Unplug the unit from the main AC power source and refer servicing to qualified service personnel under the following conditions:
 - When the power supply cord or plug is damaged.
 - If liquid has been spilled or an object has fallen into the unit.
 - If the unit has been exposed to water and/or inclement weather (rain, snow, etc.).
 - If the unit does not operate normally, when following the operating instructions. Adjust only those controls specified in the operating instructions. Improper adjustment of other controls may result in damage, and require extensive work by a qualified technician to restore the unit to normal operation.
 - If the unit has been dropped or the cabinet damaged.
 - If the unit exhibits a distinct change in performance, this indicates that service is needed.
8. **Replacement Parts** - When replacement parts are required, the service technician should use replacement parts specified by the manufacturer or that have the same characteristics as the original part. Unauthorized substitutions may result in fire, electrical shock or other hazards.
9. **Safety Check** - Upon completion of servicing or repairs to the unit, ask the service technician to perform safety checks to ensure proper operating condition.
10. **Power Sources** - Operate the unit only from the type of power source indicated on the label. If unsure of the type of power supply to use, contact your dealer or local power company.
 - For units intended to operate from battery power, refer to the operating instructions.
 - For units intended to operate with External Power Supplies, use only the recommended approved power supplies.
 - For units intended to operate with a limited power source, this power source must comply with EN60950. Substitutions may damage the unit or cause fire or shock.
 - For units intended to operate at 24VAC, normal input voltage is 24VAC. Voltage applied to the unit's power input should not exceed 30VAC.

User-supplied wiring, from the 24VAC supply to unit, must be in compliance with electrical codes (Class 2 power levels). Do not ground the 24VAC supply at the terminals or at the unit's power supply terminals.
11. **Coax Grounding** - If an outside cable system is connected to the unit, ensure that the cable system is grounded. U.S.A. models only - Section 810 of the National Electrical Code, ANSI/NFPA No.70, provides information regarding proper grounding of the mount and supporting structure, grounding of the coax to a discharge unit, size of grounding conductors, location of discharge unit, connection to grounding electrodes, and requirements for the grounding electrode.
12. **Grounding** - This unit may be equipped with a 3-wire grounding plug (a plug with a third pin, for grounding). This safety feature allows the plug to fit into a grounding power outlet only. If unable to insert the plug into the outlet, contact an electrician to arrange replacement of the obsolete outlet. Do not defeat the safety purpose of the grounding plug.
 - Outdoor equipment should only be connected to the unit's inputs after this unit has had its grounding plug connected to a grounded outlet or its ground terminal properly connected to a ground source.
 - The unit's input connectors must be disconnected from outdoor equipment before disconnecting the grounding plug or grounding terminal.
 - Proper safety precautions such as grounding should be followed for any outdoor device connected to this unit.
13. **Lightning** - For added protection during a lightning storm, or when this unit is left unattended and unused for long periods of time, unplug the unit from the wall outlet and disconnect the cable system. This will prevent damage to the unit due to lightning and power line surges.

Safety Precautions

	<p>CAUTION</p> <p>RISK OF ELECTRIC SHOCK. DO NOT OPEN!</p>	
<p>CAUTION: TO REDUCE THE RISK OF ELECTRIC SHOCK, DO NOT REMOVE COVER (OR BACK). NO USER SERVICEABLE PARTS INSIDE. REFER SERVICING TO QUALIFIED SERVICE PERSONNEL.</p>		
	<p>This symbol indicates the presence of uninsulated “dangerous voltage” within the product’s enclosure that can cause an electric shock.</p>	
	<p>This symbol indicates the presence of important operating and maintenance (servicing) instructions in the literature accompanying the appliance.</p>	
	<p>Installation should be performed by qualified service personnel only in accordance with the National Electrical Code or applicable local codes.</p>	
	<p>Power Disconnect. An appropriate disconnect device shall be provided as part of the building installation.</p>	
	<p>Directive 2002/96/EC on waste electrical and electronic equipment and its implementation in accordance with national law, electrical tools that have reached the end of their life must be collected separately and returned to an environmentally compatible recycling facility.</p>	

Preface

This guide describes how to install the UHI-ASBG-0 Series.

Audience

This guide is intended for qualified installation and service personnel who are familiar with the applicable national and local electrical codes.

Document Conventions

Convention	Meaning
Bold	Denotes a part, item, or assembly.
<i>Italic</i>	Denotes a reference to another paragraph, figure or table.
<u>Underline</u>	Used to emphasize a point.
courier	Denotes the actual name of an object, the exact code that should be typed or a message returned from a system.

Symbols

You may encounter these symbols within the document. Explanatory text accompanies each symbol, which provides additional information detailing the operation or highlighting safety information.



NOTICE! Notices inform you of essential but non-critical information. Read these messages carefully as any directions or instructions contained therein can help you avoid making mistakes.



WARNING! Warnings highlight information, that if overlooked may cause damage to the system or result in personal injury. Take warnings seriously.

Customer Support and Service

If this unit needs service, contact the nearest Bosch Security Systems Service Center for authorization to return and shipping instructions.

Service Centers

USA

Phone: 800-366-2283 or 585-340-4162

Fax: 800-366-1329

Email: cctv.repair@us.bosch.com

CCTV Spare Parts

Phone: 800-894-5215 or 408-957-3065

Fax: 408-935-5938

Email: BoschCCTVparts@ca.slr.com

Canada

Phone: 514-738-2434

Fax: 514-738-8480

Europe, Middle East & Asia Pacific Region

Phone: 44 (0) 1495 274558

Fax: 44 (0) 1495 274280

Email: rmahelpdesk@solelectron.com

For additional information, see www.boschsecurity.com

Related Publications

Refer to the latest Bosch Security Systems, Inc. Databook for the most up-to-date datasheets. To obtain a copy of the Databook, please contact your local Bosch representative.

You can also visit the Bosch Security Systems World Wide Web site at: <http://www.boschsecurity.com> to view a current listings of our publications.

9 Unpacking

This equipment should be unpacked and handled with care. If an item appears to have been damaged in shipment, notify the shipper immediately.

Verify that all the parts listed in the Parts List below are included. If any items are missing, notify your Bosch Security Systems Sales or Customer Service Representative.

The original packing carton is the safest container in which to transport the unit and must be used if returning the unit for service. Save it for possible future use.

9.1 Parts List

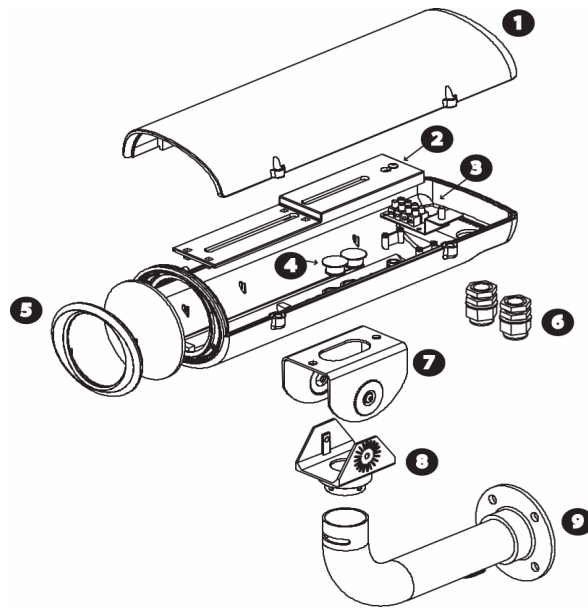
The following table lists the parts included:

Quantity	Part
1	Housing
1	Bracket
1	Installation manual
1	Bag of accessories
1	Wrench 3 mm HEX
1	Wrench tamperproof M3.5 T20
2	SCR 1/4 in. 20 x 5/8 in. N(+) SS
2	SCR 1/4 in. 20 x 1/2 in. N(+) SS
2	SCR 1/4 in. 20 x 3/8 in. N(+) SS
2	1/4 in. Washers
1	4 mm Spacer
1	9 mm Spacer
2	Rubber washers PG 3/8 in.
2	Rubber washers PG 1/2 in.
2	NPT fittings 3/8 in. CE only
2	NPT fittings 1/2 in. CE only

9.2 Tools Required

- Small flat blade screwdriver
- Phillips screwdriver (#1 and #2)
- Adjustable wrench
- Wire cutter/stripper/crimper tool

10 Exploded View



Reference	Part	Part Number
1	Top and bottom cover	SGAH1M-00-00 + XGAH1M-01-00
2	Camera tray	PTAH1M-03-00
3	Connector block	948000-00-00
4	Plugs	GJ94GB-01-00
5	Front window holder	AH7000-00-00 + QGAH1M-02-00
6	NPT fittings	948001-04-00 + 948001-05-00
7	Adjustable head	YJAHAM-02-00
8	Mount head	YJAHAM-01-00
9	J-mount base	YJAHAM-00-00

11 Description

The UHI-ASBG-0 Series is an indoor housing which meets customer demand for appearance, cost competitiveness, and easy installation. Removal of two tamper-resistant screws is all that is necessary to open the cover and access the camera and lens in its mounted position. Power and video cabling can be routed through liquid tight fittings in the rear or bottom of the housing.

Camera Ratings	
Ambient temperature ¹	0°C (32°F) - 50°C (122°F)
Power consumption	max. 10 W
Voltage	100 - 240 VAC or for low voltage models 12 - 28 VAC / 12 - 30 VDC
Weight camera without lens	0.45 kg (1 lb)
Weight lens max	1 kg (2.2 lb)
Temperature operating conditions	-20°C (-4°F) to 50°C (122°F)
Approvals	UL, cUL, CE, VDE, CSA

1. Maximum recommended ambient temperature camera enclosures: 50°C (122°F) with a de-rating of 0.8 °C (1.4°F) per Watt of the rated power consumption of the camera and lens installed inside.

12 Cable Requirements

The specifications for the UHI-ASBG-0 Series may vary depending on the model that you are operating. Refer to the following tables for more information.

Video Transmission (coaxial)

Type	Specification
Cable Type	RG-59/U for runs < 300 m (1000 ft) RG-11/U for runs < 600 m (2000 ft)
Cable Size	Outside diameter between 4.6 mm (0.181 in.) -7.9 mm (0.312 in.)
Cable Shape	Round
Shield	> 93% Braided copper shield
Center Conductor	Stranded or solid copper center
DC Resistance	< 15 Ohm/1000 (RG-59/U) < 6 Ohm/1000 (RG-11/U)
Cable Impedance	75 Ohm
Agency Rating	UL
Environmental	Outdoor rated
Temperature Rating	> 80°C
Sources	Belden 9259 H05RN-F 3 G 1.00

Input Power Cord - North American

Type	Specification
Cable Type	120 V 3x 18 AWG
Cable Size	Outside diameter between 4.6 mm (0.18 in.) -7.9 mm (0.31 in.)
Cable Shape	Round
Conductors	3-conductor version
Agency Rating	UL/C.S.A., UL VW-1
Environmental	Outdoor rated
Temperature Rating	105°C
Voltage Rating	300 V

Input Power Cord - European

Type	Specification
Cable Type	H05RN-F 3 G 0.75 and H05RN-F 3 G 1.00
Cable Size	Outside diameter between 4.6 mm (0.18 in.) -7.9 mm (0.31 in.)
Cable Shape	Round
Conductors	3-Conductor version
Agency Rating	VDE
Environmental	Outdoor rated

13 Installing the Housing

This chapter outlines the procedures needed to install the UHI-ASBG-0 Indoor Housing Series. Installation should be made by a qualified service person and all local codes should be conformed to.

13.1 Opening the Cover

The UHI-ASBG-0 housing is secured with two (2) tamper-resistant screws. To open the cover, use the supplied tamper-resistant wrench (948002-00-00 M3.5 T20) to remove the screws.

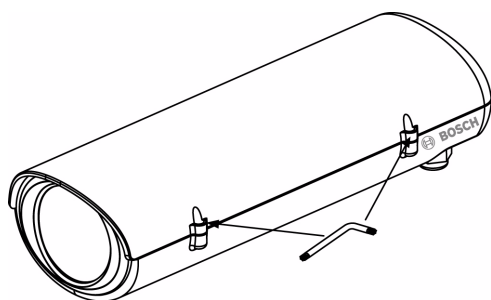


Fig. 13.1 Opening the Cover

13.2 Feed-through Wiring

The UHI-ASBG-0 features feed-through wiring holes which are used to feed the cabling through. Prior to mounting the camera, remove the rear (2) or bottom (2) rubber dome plugs and install the NPT fittings (see *Section 13.3: NPT Fittings*).

13.3 NPT Fittings

The NPT fittings ensure a tight seal. Depending on how the UHI-ASBG-0 is mounted, the NPT fittings can be installed either in the rear or from the bottom of the housing. The supplied 3/8 in. NPT fittings accept a round cable with diameters from 4.3 mm (0.17 in.) to 11.4 mm (0.45 in.). The two larger 1/2 in. NPT fittings accept cables with diameters from 6.5 mm (0.26 in.) to 10.5 mm (0.42 in.).

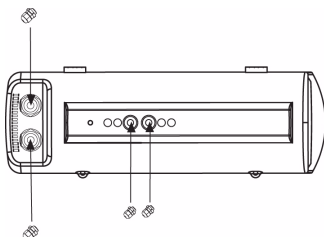


Fig. 13.2 Installing the NPT Fittings

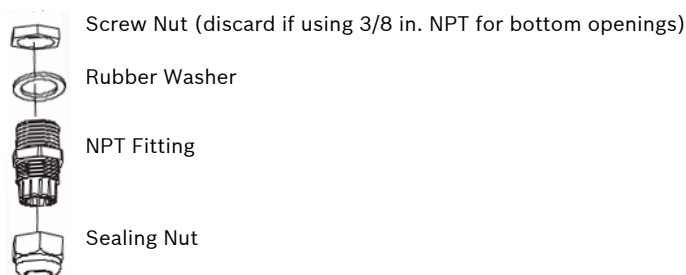


Fig. 13.3 NPT Exploded View

Installing the NPT Fittings

1. Determine to use either the rear or bottom gland holes and remove the (2) rubber hole plugs.
2. Remove the screw inside the housing that holds the camera tray. Set screw aside.
3. Unlock and remove the tray by sliding it toward the rear of the housing. Set tray aside.
4. Attach the two (2) 1/2 in. NPT fittings with the rubber washer on the outside of the housing directly to the rear hole openings (see *Figure 13.4* on page 24).

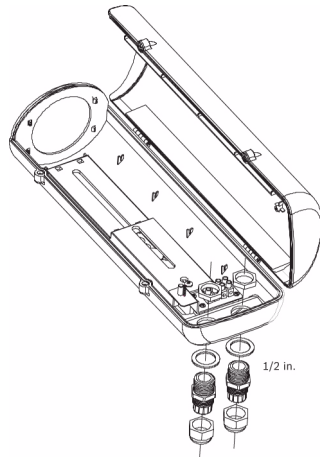


Fig. 13.4 Attaching the 1/2 in. NPT Fittings

- or -

Attach the two (2) 3/8 in. NPT fittings (discard the screw nut) with the rubber washer on the outside of the housing directly to the bottom openings (see *Figure 13.5* on page 24).

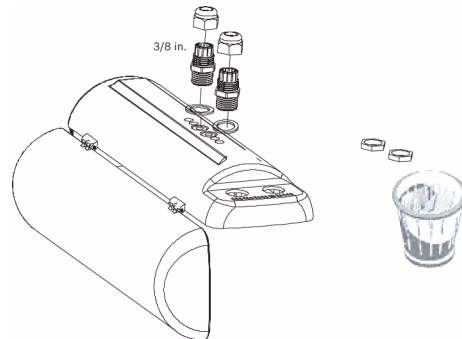


Fig. 13.5 Attaching the 3/8 in. NPT Fittings

5. Cover any unused holes with the provided dome plugs supplied with the housing.



NOTE! Tighten all fittings to ensure a secure liquid-tight seal. Failure to do so could allow moisture to enter the housing and damage the camera and lens. If a sealant is used, be sure it is a neutral cure type. Sealants that release acid may harm camera electronics. Use of drip loops is recommended on the wiring outside of the rear end cap.

13.4 Wire Preparation

Supply the UHI-ASBG-0 with power by using a power cord that complies with the Nec 400-4 CEC rule 4-010 and is marked with INDOOR, W or W-A. For 24 V cameras, use the recommended maximum cable length chart for selecting the proper wire size.

Wire Size mm ²	Wire Size AWG	Housing Distance
0.5	20	27 m (90 ft)
1	18	42 m (140 ft)
1.5	16	67 m (220 ft)
2.5	14	108 m (355 ft)
4	12	172 m (565 ft)

Table 13.1 Maximum cable lengths for 24 V camera housings

Preparing the Power Supply

Cut the power cord on 120 VAC and 230 VAC camera models; leave enough cable to allow a connection to the terminal block. Strip no less than 6 mm (0.25 in.) and no more than 8 mm (0.31 in.) of insulation away from the wire. Do not nick the wires.

Preparing the Terminal Block

Wire sizes larger than 2.5 mm² (14 AWG) require a splice to accommodate the terminal block. The terminal block accepts wires ranging from 0.5 to 2.5 mm² (20 to 14 AWG). When using larger wire sizes, splice to a smaller size wire at the terminal block end. The splice may need to be enclosed in a junction box if it does not pass through the fittings.

WIRING DIAGRAM

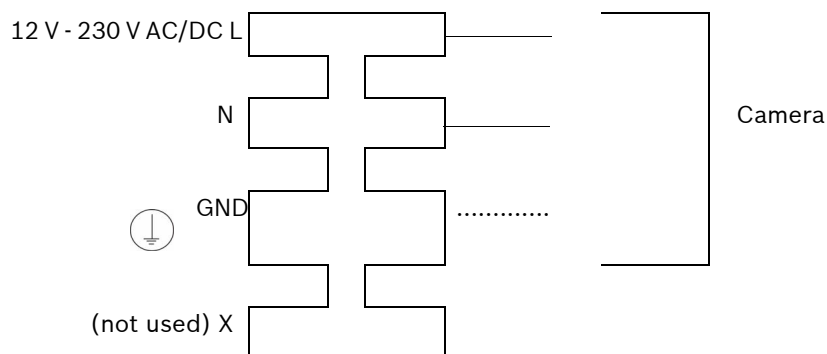


Fig. 13.6 Terminal Wiring



WARNING! External interconnecting cables are to be installed in accordance to NEC, ANSI/NFPA70 (for US application) and Canadian Electrical Code, Part I, CSA C22.1 (for CAN application) and in accordance to local country codes for all other countries.

Branch circuit protection incorporating a 20 A, 2-pole Listed Circuit Breaker or Branch Rated Fuses are required as part of the building installation. A readily accessible 2-pole disconnect device with a contact separation of at least 3 mm must be incorporated.

13.5 Attaching the Camera and Spacer to the Tray

The UHI-ASBG-0 includes two (2) spacers which may be required to keep the camera level (see *Figure 13.7* on page 26). If a spacer is not used, the camera may dip down creating a port hole effect.

Camera and Spacer Installation

1. Attach the lens to the camera.
2. Tentatively place the camera tray inside the housing. Do not secure.
3. Determine if one of the supplied spacers are required and place on top of the lower portion of the tray as seen in *Figure 13.7* on page 26.
4. Place the camera in the up-right position inside the housing with the lens approximately 1/8 in. away from the housing window (lens should not touch window).

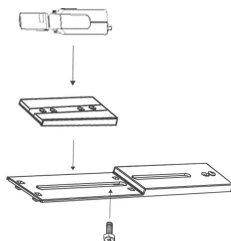


Fig. 13.7 Attaching the Camera and Spacer to the Tray

5. Hold all three (3) components in place (tray, spacer, and camera) and remove from housing. Turn components over and secure with 1/4-20 x 5/8 in. screw and large flat washer.
6. Set aside.

14 Mounting the Housing

The UHI-ASBG-0 housing includes a J-mount which features a removable camera bracket and locking grooves to keep the housing from drooping. The mount is vertically adjustable by pushing the housing up or down.

Mounting Procedure

1. Determine a proper location for the housing.
2. Insert the coax and power lead wires from the wall through the supplied J-mount allowing enough slack to pull through the housing (see *Figure 14.1* on page 27 if using the bottom glands or see *Figure 14.2* on page 27 if using the rear glands).

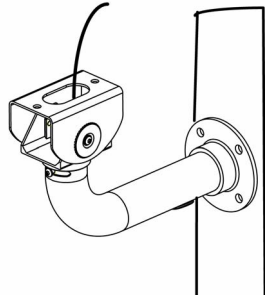


Fig. 14.1 Feeding the Wire using the Bottom NPT Fittings

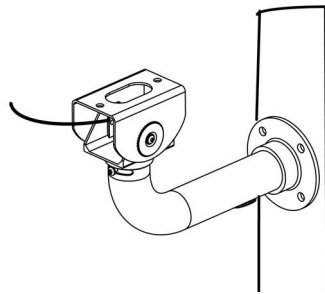


Fig. 14.2 Feeding the Wire using the Rear NPT Fittings

3. Prepare the surface for mounting and install the J-mount.

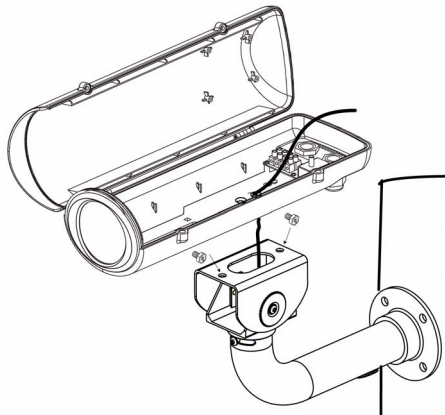


Fig. 14.3 Mounting the J-mount and Housing

4. Place the UHI-ASBG-0 housing on top of the J-mount while feeding the wires through the bottom or rear NPT fittings.
5. Make sure that the weight of the camera is distributed evenly.

- Secure the housing to the mount by attaching two 1/4-20 x 0.50 in. screws and two 1/4 in. washers. The washers must be used for the screws to thread properly.



NOTE! The outermost set of 1/4-20 threaded holes are for mounting to feed-through mounts and the innermost 1/4-20 holes are for mounting to all other mounts and pan/tilts (see Figure 1). For mounting to all other mounts and pan/tilts, refer to the specific device's installation guide.

14.1 Installing the Camera Tray

Verify operation of the camera and lens and adjust the camera focus and iris as necessary. See the instruction manual for your specific camera.

Installing the Camera Tray

- Slide the camera tray with attached camera (see *Section 13.5: Attaching the Camera and Spacer to the Tray*) into the slot of the housing.
- Secure the camera tray with screw.

14.2 Connecting the Wires

Before proceeding, verify that the BNC for the Video Coax Cable is separated from the mains power connections / circuitry and there is a physical spacing barrier between cables. For wiring video coax connections, use only the cables specified in *Section 12: Cable Requirements*.

Connecting the Wires

- Attach the BNC connector to the coax.
- Connect the coax cable to the camera.
- Connect the power leads from the source to the terminated block.
- Connect the wires from the terminal block to the camera.
- Tighten the fittings to 8.5 N.m to 9.0 N.m (75 in. lb to 80 in. lb). The torque rating is approximately 1 to 1-1/2 turns past the point where the fitting starts to grip the wire.
 - Tighten all fittings to ensure a liquid-tight seal. Failure to do so could allow moisture to enter the housing and damage electronic parts, camera, and lens.
 - If a sealant is used, be sure it is a neutral cure type. Sealants that release acetic acid may harm camera electronics.
 - Use of drip loops is recommended on the wiring outside of the rear end cap.
- Use the provided hole plugs to plug any unused holes.
- Close the cover and secure the tamper-resistant screws with the supplied wrench.

15 Operation

These housings require no operational adjustments other than camera/lens adjustments.

16 Maintenance

No special maintenance is required other than occasional cleaning of the window. Regularly scheduled maintenance will help prolong the operation life of this unit. Clean the viewing window as needed with a mild, nonabrasive detergent in water and a soft cloth.

美洲：

Bosch Security Systems
130 Perinton Parkway
Fairport, New York, 14450
USA

电话 +1 800 289 0096

传真 +1 585 223 9180

www.boschsecurity.us

© Bosch Security Systems, Inc. 2006

欧洲、中东和亚洲：

Bosch Security Systems B.V.
P.O.Box 80002
5600 JB Eindhoven
The Netherlands

电话 +31 40 2577 200

传真 +31 40 2577 202

www.boschsecurity.com.cn

亚太地区：

Bosch Security Systems Pte Ltd.
38C Jalan Pemimpin
Singapore 577180

电话 +65 6319 3450

传真 +65 63139 3499

www.boschsecurity.com