

This manual is applicable to these products.

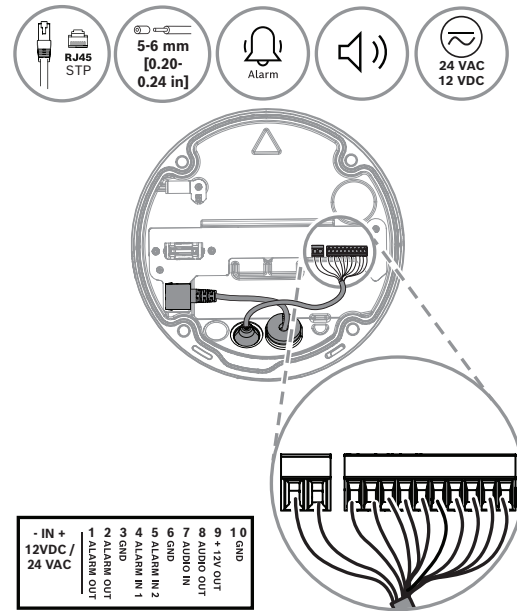
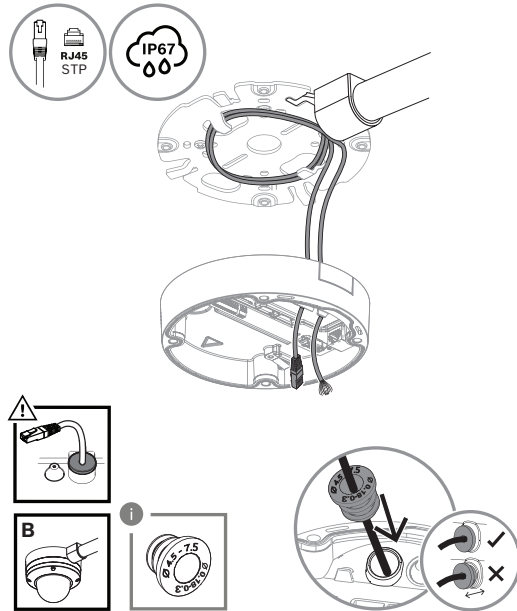
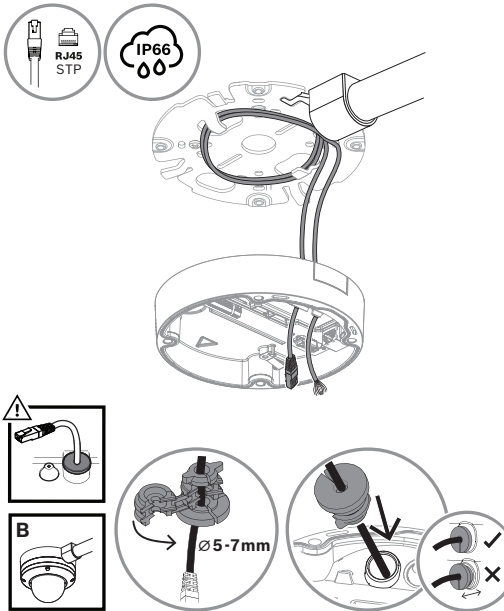
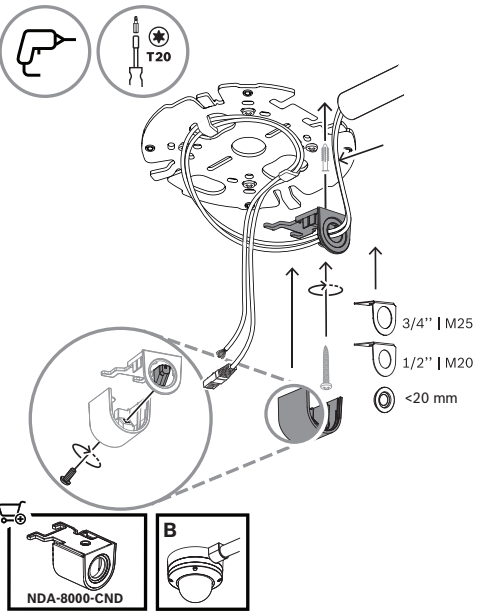
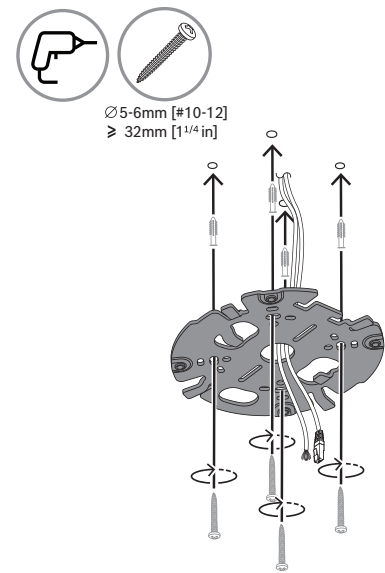
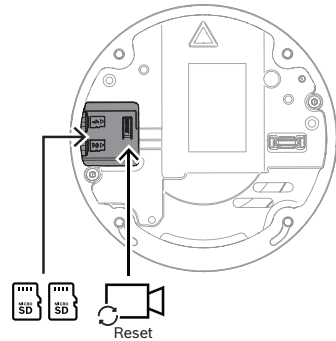
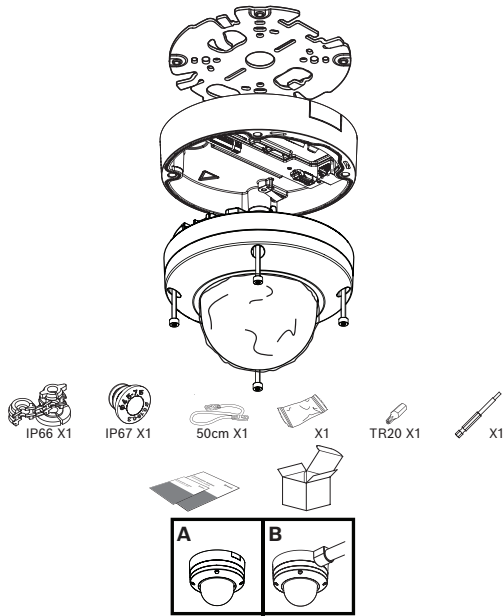
Dieses Handbuch gilt für diese Produkte.

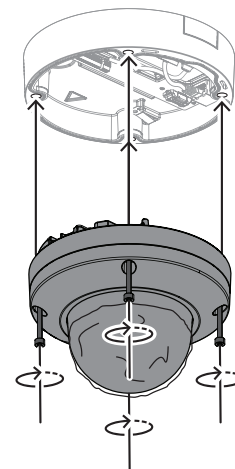
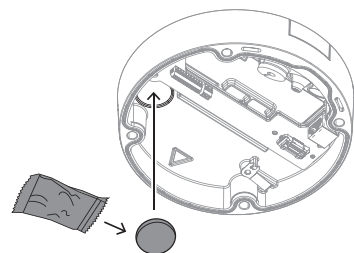
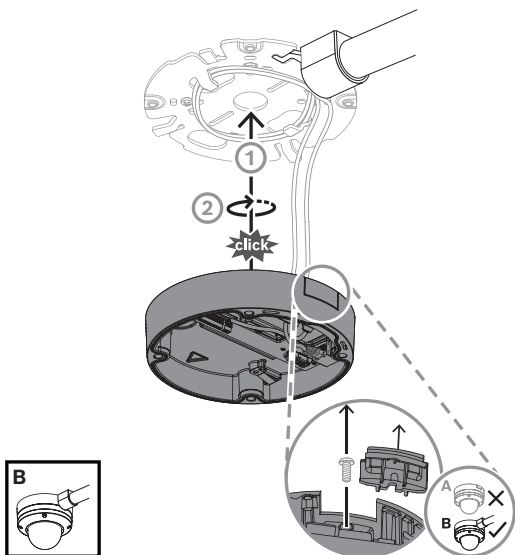
Ce manuel s'applique à ces produits.

Este manual es aplicable a estos productos.

本手册适用于这些产品。

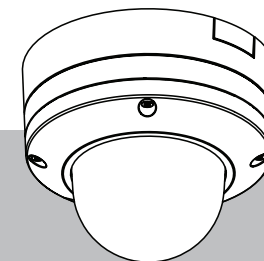
NDE-8702-RX, NDE-8702-RX-H, NDE-8702-RXT, NDE-8702-RXT-H, NDE-8703-R, NDE-8703-R-H, NDE-8703-RT, NDE-8703-RT-H, NDE-8703-RX, NDE-8703-RX-H, NDE-8703-RXT, NDE-8703-RXT-H, NDE-8704-R, NDE-8704-R-H, NDE-8704-RT, NDE-8704-RT-H, NDE-8704-RX, NDE-8704-RX-H



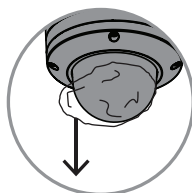
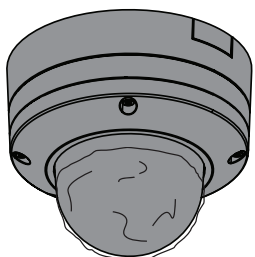


FLEXIDOME 8100i*

*List of applicable products inside document

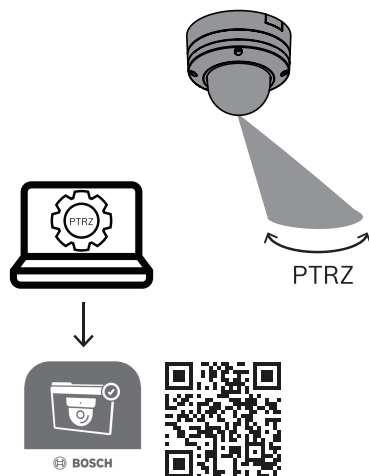


en Quick installation guide



Project Assistant app

Windows | iOS | Android



<https://downloadstore.boschsecurity.com/>

Bosch Security Systems B.V.

Torenallee 49

5617 BA Eindhoven

Netherlands

www.boschsecurity.com

© Bosch Security Systems B.V., 2025

Building solutions for a better life