

Installation Instructions for the B334 Bracket

General Information:

The B334 is a heavy-duty wall or ceiling mounting bracket designed for use with the DS794 and DS720 Series detectors.

When wall mounted, the bracket permits $\pm 90^\circ$ horizontal and $+5^\circ$ to -15° vertical adjustment of the detector. When ceiling mounted, the horizontal adjustment increases to a full 360° .

The bracket is primarily intended for mounting to standard electrical single-gang switch or outlet boxes. The bracket may also be surface mounted, but there is no provision for hidden wiring.

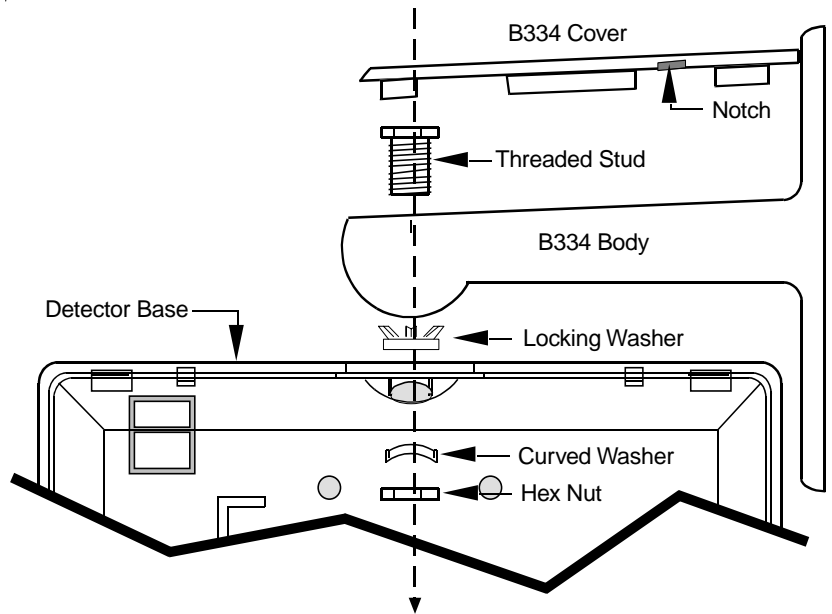


Figure A - B334 Installation Procedure

continued on reverse



Security Systems

BOSCH

Installation Instructions for the B334 Bracket

General Information:

The B334 is a heavy-duty wall or ceiling mounting bracket designed for use with the DS794 and DS720 Series detectors.

When wall mounted, the bracket permits $\pm 90^\circ$ horizontal and $+5^\circ$ to -15° vertical adjustment of the detector. When ceiling mounted, the horizontal adjustment increases to a full 360° .

The bracket is primarily intended for mounting to standard electrical single-gang switch or outlet boxes. The bracket may also be surface mounted, but there is no provision for hidden wiring.

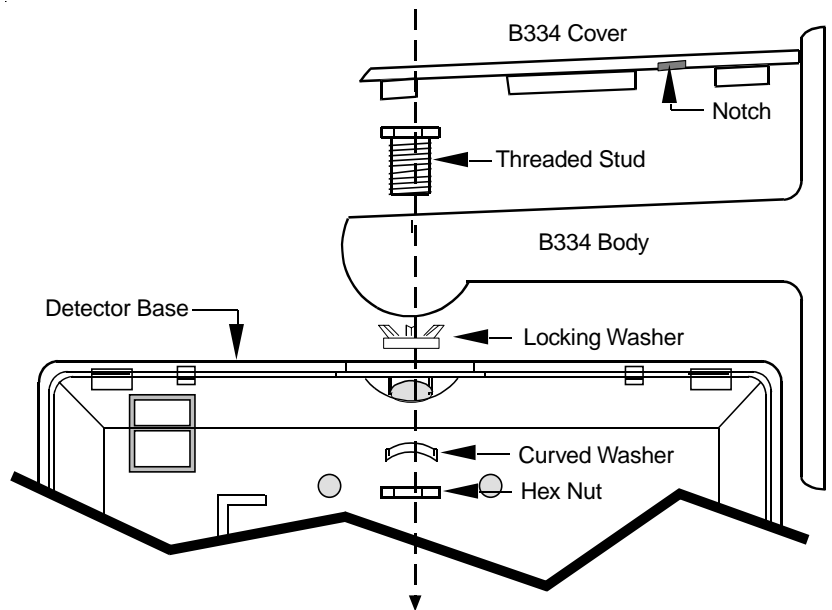


Figure A - B334 Installation Procedure

continued on reverse



Security Systems

BOSCH

Installation:

NOTE: At this time, all wiring should be unpowered.

- Remove the Bracket cover. Insert the blade of a small screwdriver into the notch on the side of the bracket, then twist.
- Insert the Alarm and Power wiring through the wire entrance hole (do not insert if surface mounting).
- Mount the Bracket to a standard single-gang switch or outlet box using the supplied bevel head screws (if surface mounting, use wall screw/anchor assemblies or appropriate alternatives).
- Remove the circuit board from the detector's base. Reference the detector's installation instructions.
- Knock-out the thin-wall wire entrance at the top of the detector base.
- Insert the threaded stud through the appropriate (wall or ceiling) stud hole of the Bracket. Use the bottom hole for wall mounting; the front hole for ceiling mounting. Make sure the hex head is seated in place.
- Complete the Bracket assembly. Secure the Bracket to the detector using the supplied curved washer, locking washer, and hex nut.

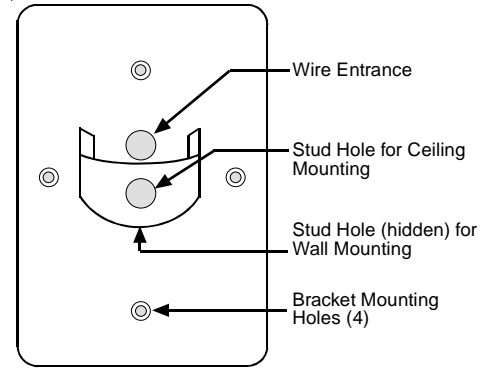


Figure B - B334 mounting/wiring hole configuration

NOTE: The ears of the curved washer should face the sides of the base. At this time, only hand tighten the hex nut.

- Thread the wiring through the threaded stud of the Bracket and along the wiring channel into the detector's base.
- Return the circuit board to the detector base.
- Aim the detector in the desired direction, then tighten the hex nut using the supplied hex wrench.
- Complete the detector installation according to the detector's installation instructions. Should the detector require realignment, loosen the hex nut, reposition the detector, then re-tighten the hex nut.

Installation:

NOTE: At this time, all wiring should be unpowered.

- Remove the Bracket cover. Insert the blade of a small screwdriver into the notch on the side of the bracket, then twist.
- Insert the Alarm and Power wiring through the wire entrance hole (do not insert if surface mounting).
- Mount the Bracket to a standard single-gang switch or outlet box using the supplied bevel head screws (if surface mounting, use wall screw/anchor assemblies or appropriate alternatives).
- Remove the circuit board from the detector's base. Reference the detector's installation instructions.
- Knock-out the thin-wall wire entrance at the top of the detector base.
- Insert the threaded stud through the appropriate (wall or ceiling) stud hole of the Bracket. Use the bottom hole for wall mounting; the front hole for ceiling mounting. Make sure the hex head is seated in place.
- Complete the Bracket assembly. Secure the Bracket to the detector using the supplied curved washer, locking washer, and hex nut.

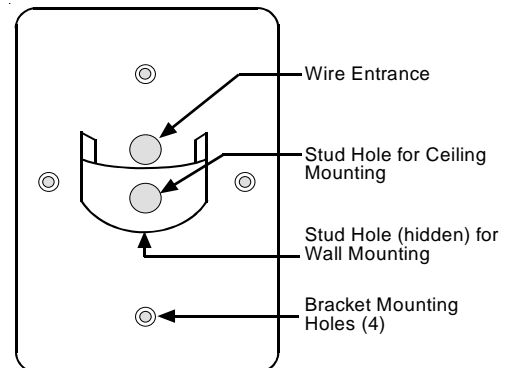


Figure B - B334 mounting/wiring hole configuration

NOTE: The ears of the curved washer should face the sides of the base. At this time, only hand tighten the hex nut.

- Thread the wiring through the threaded stud of the Bracket and along the wiring channel into the detector's base.
- Return the circuit board to the detector base.
- Aim the detector in the desired direction, then tighten the hex nut using the supplied hex wrench.
- Complete the detector installation according to the detector's installation instructions. Should the detector require realignment, loosen the hex nut, reposition the detector, then re-tighten the hex nut.